



Easy Like Sunday Hut Host



Easy Like Sunday has been one the most popular events at the club for years. Every Sunday from 12 to 3pm, a different group will host at Harvey's Hut and welcome skiers with a cup of hot chocolate, treats of their choice around a fire. This is a free event.



WHY VOLUNTEERING?

- Share a moment of conviviality with the people of your choice during the preparation (we encourage you to offer home-made yummy food)
- Connect with other skiers during the event and share your passion for skiing and being outside



ABILITIES

- Being able to ski all the way to Harvey's Hut
- Being willing to spend a full day drinking hot chocolate in the cold next by a fire and smiling, joking with skiers who stop by



VOLUNTEER NEEDED

From December 8, 2024 to April 6, 2025.
We can accommodate 18 groups.



TIME COMMITMENT

Time: 11am to 4pm + prep. time at home

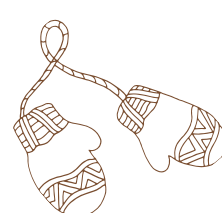
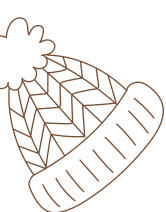
A snowmobile ride is organize to transport food and equipment at 11am from the chalet to the hut. The ride back is around 3h15pm.

We recommend that skiers leave the chalet at 11 a.m. (or a little earlier) as it takes time to warm up the cabin. Event start at 12pm.



WEATHER CONDITION

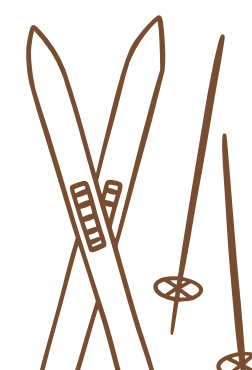
- The event may be cancelled if there is not enough snow on the trails (beginning/end of season) or if trails are unsafe (icy)
- The temperature cut-off is -20 celsius



DUTIES AND RESPONSIBILITIES

With the support of the Club, volunteers will be offering a welcoming place to stop by and warm up on a chill Sunday afternoon. The club is providing all cups, bowls, hot chocolate, pots, ... (see detailed list on second page) and is refunding \$200 for your grocery and prep expenses after the event.

- Preparing the food/beverage of your choice
- Make a fire in the stove and outside to let people warm up
- Warmly welcoming skiers
- Keep the cabin and grounds clean

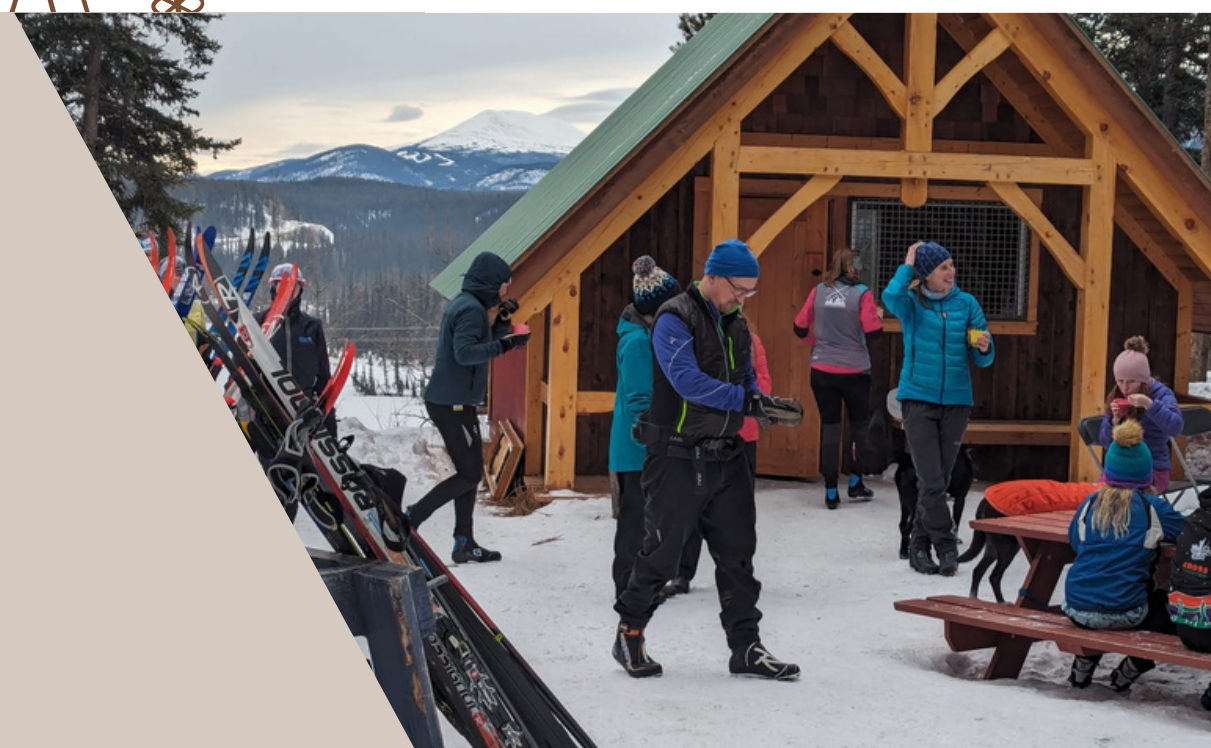
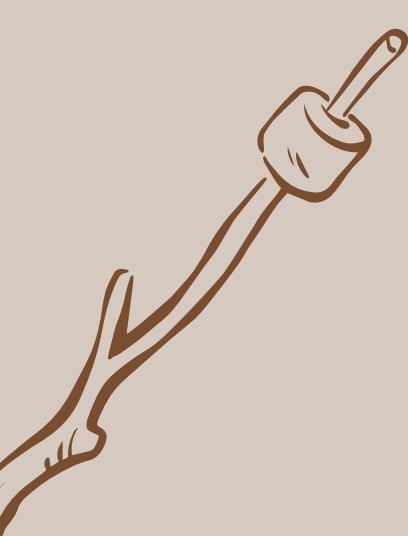


READY TO JOIN US?

[Click here to become an Easy Like Sunday Hut Host](#)

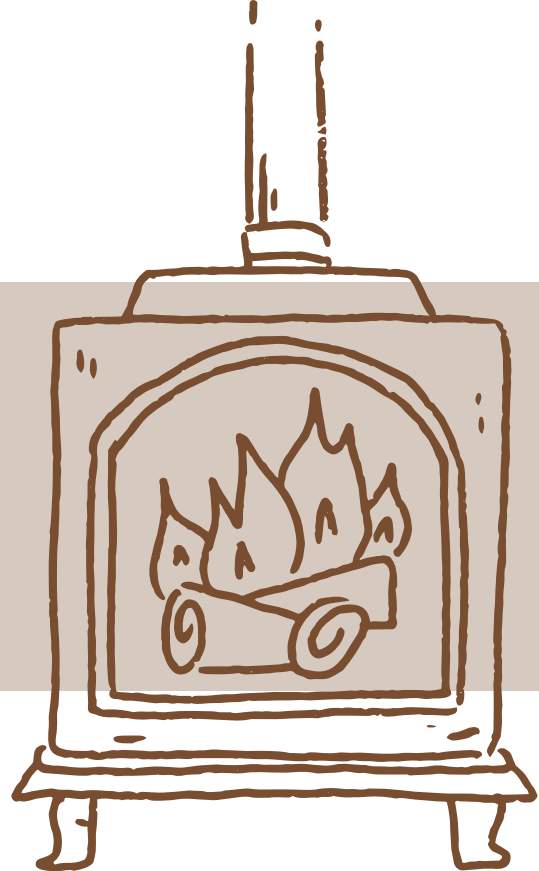
QUESTIONS? COMMENTS?

Assistant Club Manager / Juliette Romain
office@xcskiwhitehorse.ca





STUFF YOU SHOULD KNOW!



WHAT TO EXPECT

How many people should we expect?

Easy Like Sunday welcomes an average of a hundred people (less on cold Sundays, on sunny days there can be as many as 150).

Do we have to ski to the hut?

Yes. We transport all the necessary equipment only by snowmobile (don't hesitate to bring a change of clothes to keep warm after skiing). We ask you to ski all the way there.

How long does it take to ski to the hut?

It's about 3 km, on an green trail, from the main chalet to the hut. You can ski at your own pace to enjoy the trails. Allow 30 minutes to 1 hour depending on you. If you're new to our trails, don't hesitate to ski to the hut before the day to find out how long it takes.

What is the cold weather policy?

The temperature cut-off is -20 celsius. If the forecast calls for very cold weather, we'll remain on stand-by until Friday (Saturday morning at the latest), when we'll make the decision to maintain or cancel.

Who pays for the groceries?

The Club allocates \$200 for each Easy Like Sunday. You're in charge of buying what you need. You'll be reimbursed up to \$200 for your grocery and prep expenses by check, after the event.

WHAT IS PROVIDE

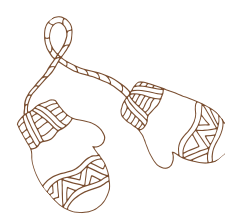


- Camping stove with propane
- 2 large water jug
- Fire starter, matchsticks, ax
- 2 pots
- Utensils (knives, ladle, spoon), cups, bowl, napkin, garbage bag, tablecloth
- Hot chocolate powder / Tea / Coffee
- Marshmallow + roasting sticks
- Campfire Grill
- First Aid Kit

WHAT YOU MUST BRING



- Extra clothes (layers, dry socks, blanket, coat, winter boots...)
- Hand/feet warmers



FOOD & BEVERAGES IDEAS

- Home-made pastries of your choice
- Campfire BBQ
- Home-made soup
- Hot-Cider
- Style "Cabane a sucre"
- Hot chocolate bar (with different choices for spicing up your chocolate: whipped cream, syrup, orange peel, cracker chips, candy canes, mini marshmallows, cinnamon...)

